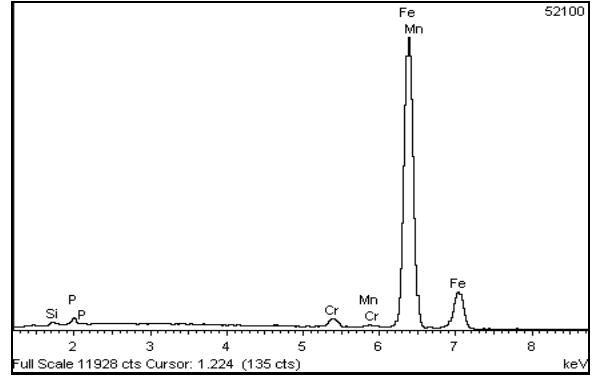
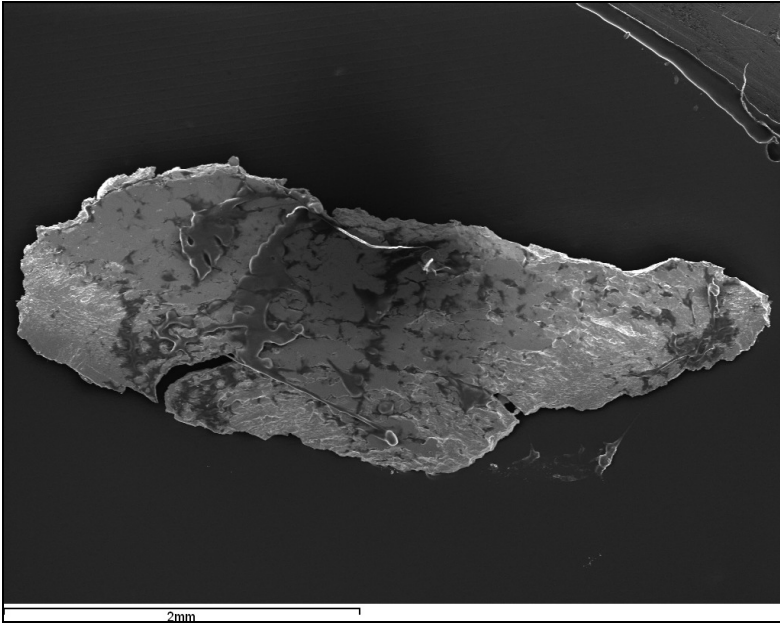




Attn §  
 CC § Duty Engineer  
 CC § ---  
 Equip Type / SN § ---  
 Position § ---  
 Description § MGB Mast Chip

Laboratory Ref AV15G133  
 Customer Ref § ---  
 Sample Date § 17 Jul 15  
 Report Date 18 Jul 15  
 Date Received 18 Jul 15  
 Aircraft Reg § ---  
 Aircraft Type § AW139  
 Aircraft SN § ---  
 Report Issue: 1

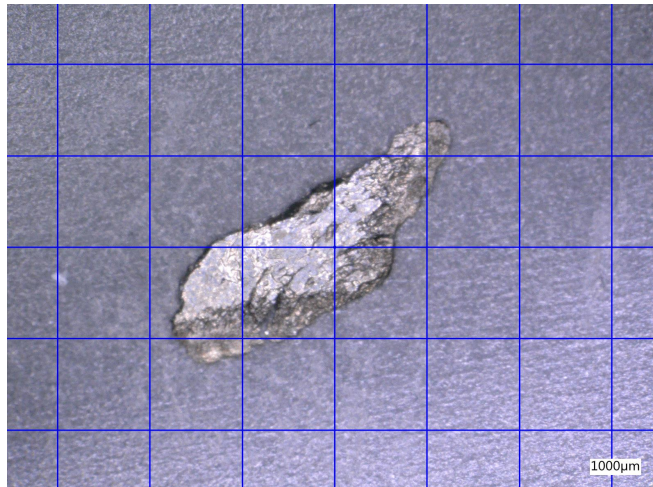


| Element | Series | Atomic% | Weight% |
|---------|--------|---------|---------|
| Cr      | K      | 1.61    | 1.51    |
| Fe      | K      | 95.76   | 96.85   |
| Mn      | K      | 0.47    | 0.46    |
| P       | K      | 1.40    | 0.79    |
| Si      | K      | 0.77    | 0.39    |
| Totals  |        |         | 100.00  |

**Main Constituent**    **Material** (nearest match)  
 Iron                    1.5% Chromium steel such as SAE 52100 (e.g. AMS 6440 or 6444).

**Form**                    **Condition**            **Size (mm)**            **Quantity**  
 Slivers                    Shiny                    up to 04.4 x 1.6            Approx. 5

First optical image of SAE 52100 steel sliver.

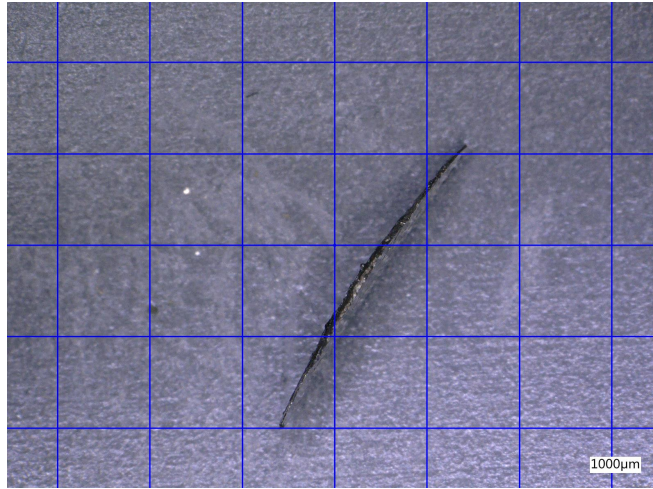




Attn §  
 CC § Duty Engineer  
 CC § ---  
 Equip Type / SN § ---  
 Position § ---  
 Description § MGB Mast Chip

Laboratory Ref AV15G133  
 Customer Ref § ---  
 Sample Date § 17 Jul 15  
 Report Date 18 Jul 15  
 Date Received 18 Jul 15  
 Aircraft Reg § ---  
 Aircraft Type § AW139  
 Aircraft SN § ---  
 Report Issue: 1

Second optical image of SAE 52100 steel sliver.



Third optical image of SAE 52100 steel sliver.

